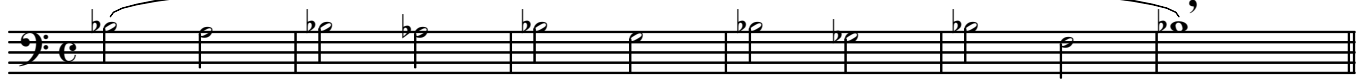


# Brass Warm-Up Routine

Compiled by George Palton

Trombone  
BC Euph

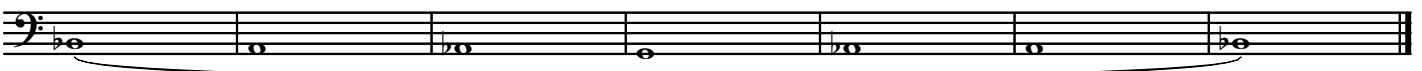
#1



7



15



#2

22



30



38



#3 \*Use alternate fingerings as directed

46



54



60

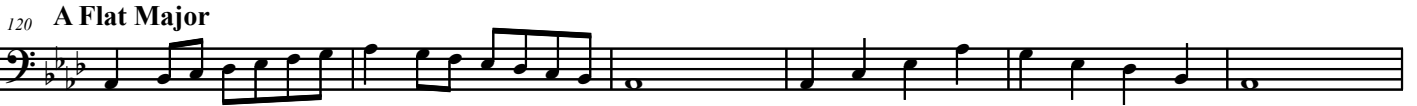
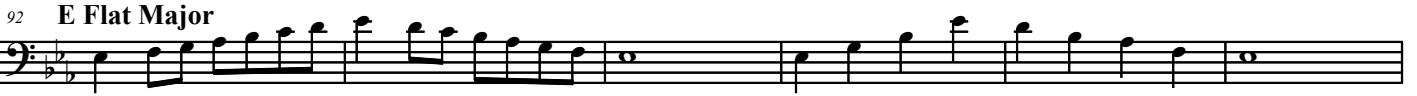


68



2  
78 **B Flat Major**

Brass Warm-Up Routine



162 D Major

Musical staff for D Major warm-up, measures 162-167. The staff is in bass clef with a key signature of two sharps (F# and C#). The melody consists of eighth and quarter notes, starting on D2 and moving up to D4.

168

Musical staff for D Major warm-up, measures 168-175. The staff is in bass clef with a key signature of two sharps (F# and C#). The melody continues with eighth and quarter notes, ending on D4.

176 D Flat Major

Musical staff for D Flat Major warm-up, measures 176-181. The staff is in bass clef with a key signature of two flats (Bb and F). The melody consists of eighth and quarter notes, starting on D2 and moving up to D4.

182

Musical staff for D Flat Major warm-up, measures 182-189. The staff is in bass clef with a key signature of two flats (Bb and F). The melody continues with eighth and quarter notes, ending on D4.

190 G Flat Major

Musical staff for G Flat Major warm-up, measures 190-195. The staff is in bass clef with a key signature of three flats (Bb, F, and C). The melody consists of eighth and quarter notes, starting on G2 and moving up to G4.

196

Musical staff for G Flat Major warm-up, measures 196-203. The staff is in bass clef with a key signature of three flats (Bb, F, and C). The melody continues with eighth and quarter notes, ending on G4.

204 A Major

Musical staff for A Major warm-up, measures 204-209. The staff is in bass clef with a key signature of three sharps (F#, C#, and G#). The melody consists of eighth and quarter notes, starting on A2 and moving up to A4.

210

Musical staff for A Major warm-up, measures 210-217. The staff is in bass clef with a key signature of three sharps (F#, C#, and G#). The melody continues with eighth and quarter notes, ending on A4.

218 E Major

Musical staff for E Major warm-up, measures 218-223. The staff is in bass clef with a key signature of four sharps (F#, C#, G#, and D#). The melody consists of eighth and quarter notes, starting on E2 and moving up to E4.

224

Musical staff for E Major warm-up, measures 224-231. The staff is in bass clef with a key signature of four sharps (F#, C#, G#, and D#). The melody continues with eighth and quarter notes, ending on E4.

232 B Major

Musical staff for B Major warm-up, measures 232-237. The staff is in bass clef with a key signature of five sharps (F#, C#, G#, D#, and A#). The melody consists of eighth and quarter notes, starting on B2 and moving up to B4.

238

Musical staff for B Major warm-up, measures 238-245. The staff is in bass clef with a key signature of five sharps (F#, C#, G#, D#, and A#). The melody continues with eighth and quarter notes, ending on B4.

**B Flat Chromatic (1 Octave)**

246

Musical notation for B Flat Chromatic (1 Octave) in bass clef, starting on Bb and moving chromatically up to Bb one octave higher. The scale is written in a single line with a double bar line at the end.**E Flat Chromatic (1 Octave)**

250

Musical notation for E Flat Chromatic (1 Octave) in bass clef, starting on Eb and moving chromatically up to Eb one octave higher. The scale is written in a single line with a double bar line at the end.**F Chromatic (2 Octaves)**

254

Musical notation for F Chromatic (2 Octaves) in bass clef, starting on F and moving chromatically up to F two octaves higher. The scale is written in a single line with a double bar line at the end.

258

Musical notation for F Chromatic (2 Octaves) in bass clef, starting on F and moving chromatically down to F two octaves lower. The scale is written in a single line with a double bar line at the end.**B Flat Chromatic (2 Octaves)**

262

Musical notation for B Flat Chromatic (2 Octaves) in bass clef, starting on Bb and moving chromatically up to Bb two octaves higher. The scale is written in a single line with a double bar line at the end.

266

Musical notation for B Flat Chromatic (2 Octaves) in bass clef, starting on Bb and moving chromatically down to Bb two octaves lower. The scale is written in a single line with a double bar line at the end.**Scale and Rhythm Drills:**

Combine a major scale with one of the following articulations and rhythmic patterns (see Rhythm Drills).

270

Musical notation for Scale and Rhythm Drills in bass clef, showing five notes on a staff with various articulations: a dot above the first note, an accent (>) above the second, a breath mark (-) above the third, an accent (>) above the fourth, and an accent (^) above the fifth. The notes are on a single line with a double bar line at the end.



Rhythm Drills

79 80 81 82 83 84

85 86 87 88 89 90

91 92 93 94 95 96

97 98 99 100 101 102

103 104 105 106 107 108

109 110 111 112 113 114

115 116 117 118 119 120

121 122 123 124 125 126

127 128 129 130 131 132

133 134 135 136 137 138

139 140 141 142 143 144

145 146 147 148 149 150

151 152 153 154 155 156